



EVENTS CALENDAR - MICHAELMAS 2018

OCTOBER

MONDAY 15
TASTING AT THE TEMPLE
SOUTH AMERICAN WINES

TUESDAY 16 **QS**
ROSAMUND SMITH MOOT
FINAL

WEDNESDAY 17
SURVIVE AND THRIVE
PROGRAMME:
UNDERSTANDING BODY
LANGUAGE **SOLD OUT**

THURSDAY 18 **QS**
PRIVATE GUEST NIGHT

TUESDAY 23 **QS**
ALL INN DINING

WEDNESDAY 24
MTSA EVENT: BLACK
HISTORY MONTH

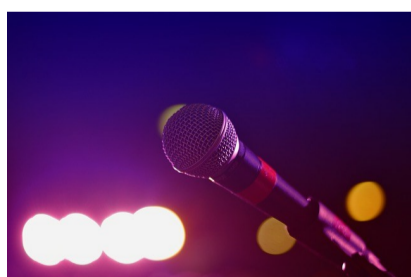
MONDAY 29
BOOK CLUB: AND IS THERE
HONEY STILL FOR TEA

WEDNESDAY 31 **QS**
BENCH CALL

NOVEMBER

MONDAY 5
HAMLYN LECTURE:
ROBIN ALLEN QC

THURSDAY 8 **QS**
KARAOKE NIGHT



LUNCH CLOSURE DATES:
THURSDAY 22 NOVEMBER FOR CALL DAY
FRIDAY 21 DECEMBER TO MONDAY 7 JANUARY

SATURDAY 10
LORD MAYOR'S SHOW

SUNDAY 11 **QS**
SUNDAY LUNCH

MONDAY 12
TASTING AT THE TEMPLE:
CHÊNE BLEU RHONE WINES
WITH DANIELLE ROLET

MONDAY 12
LAW IN STYLE
FASHION SHOW, SHOPPING
& GREATEST FICTIONAL
LAWYER DEBATE



MONDAY 12 **QS**
SHERRARD CONVERSATIONS

TUESDAY 13 **QS**
READER'S FEAST
HIS HONOUR PETER MURHY:
THE BURY SHAKESPEARE OR
TO PRAISE HIM



THE SURVIVE & THRIVE PROGRAMME

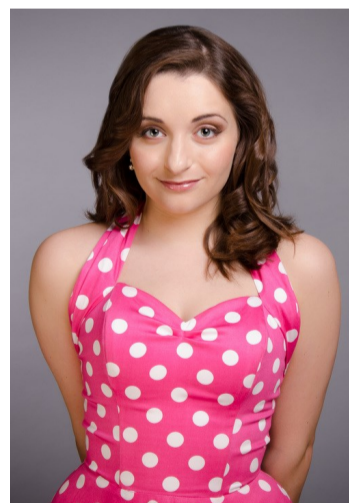


THURSDAY 15
SURVIVE AND THRIVE
PROGRAMME:
HOW TO FUTURE PROOF
YOUR SKILLS IN THE DIGITAL
AGE

SATURDAY 17
CPD DAY

SUNDAY 18
CHILDREN'S MUSIC
CONCERT: MOZART'S THE
MAGIC FLUTE

TUESDAY 20 **QS**
MUSIC NIGHT:
AURORA ORCHESTRA &
SORAYA MAFI



WEDNESDAY 21 & **QS**
THURSDAY 22
MICHAELMAS CALL DAYS

THURSDAY 22
MIDLAND CIRCUIT DINNER
ON CIRCUIT AT THE OPUS
RESTAURANT, BIRMINGHAM

SATURDAY 15
NORTHERN & NORTH-
EASTERN CIRCUIT DINNER
ON CIRCUIT AT THE LOWRY
HOTEL, MANCHESTER

TUESDAY 27 **QS**
BENCH CALL

THURSDAY 29 **QS**
PRIVATE GUEST NIGHT

DECEMBER

TUESDAY 4 **QS**
SHERRARD CONVERSATIONS

TUESDAY 11 **B**
PARLIAMENT DINNER

FRIDAY 7 & SUNDAY 8
CUMBERLAND LODGE

THURSDAY 13 &
FRIDAY 14
REVELS!

SUNDAY 16
CAROL SERVICE LUNCH



THURSDAY 20 **B**
BENCH & STAFF CHRISTMAS
DRINKS

**CHRISTMAS LUNCH IN
MIDDLE TEMPLE HALL**
WEDNESDAY 5
THURSDAY 6
WEDNESDAY 12
THURSDAY 13

B = BENCH ONLY

I = INVITE ONLY

QS = QUALIFYING SESSION



EVENTS CALENDAR - MICHAELMAS 2018

FUNDRAISING

FOR FURTHER DETAILS PLEASE VISIT
MIDDLETEMPLE.ORG.UK



SIR PAUL JENKINS FUND
DONATIONS ARE NOW BEING
ACCEPTED FOR THE FUND
WHICH AIMS TO IMPROVE
ACCESS TO THE BAR FOR
THOSE FROM NON-
TRADITIONAL BACKGROUNDS.
VISIT
MIDDLETEMPLE.ORG.UK/
ABOUT-US/GIVING/SIR-PAUL-
JENKINS-FUND

MIDDLE TEMPLE HISTORICAL SOCIETY

ALL BOOKINGS AND INQUIRIES
VIA
MTHS@MIDDLETEMPLE.ORG.UK

TUESDAY 30 OCTOBER
ST GEORGE IN A WIG: THE LIFE
OF MR JUSTICE MCCARDIE

WEDNESDAY 28 NOVEMBER
THE SALE OF THE LATE KING'S
GOODS: CHARLES I AND HIS ART
COLLECTION

MERCHANDISE

A RANGE OF MIDDLE TEMPLE MERCHANDISE IS
NOW AVAILABLE TO PURCHASE AT CERTAIN
INN EVENTS, FRONT OF HOUSE AND FROM THE
TREASURY OFFICE.

FOR FURTHER INFORMATION CONTACT:
MERCHANDISE@MIDDLETEMPLE.ORG.UK



TEMPLE MUSIC FOUNDATION EVENTS



MONDAY 15 OCTOBER - 19:00

OUTCRY ENSEMBLE AUTUMN CONCERT
MIDDLE TEMPLE HALL

THURSDAY 18 OCTOBER - 19:30

ENGLISH TOURING OPERA PRESENTS BACH: ST MATTHEW PASSION
TEMPLE CHURCH

TUESDAY 30 OCTOBER - 19:00

IMS PRUSSIA COVE
PARLIAMENT CHAMBER, INNER TEMPLE

FRIDAY 9 NOVEMBER - 19:00

REQUIEM: THE ENGLISH CHAMBER CHOIR
TEMPLE CHURCH

TUESDAY 13 NOVEMBER - 19:00

BRAHMS A GERMAN REQUIEM
TEMPLE CHURCH

TUESDAY 20 NOVEMBER - 19:30

THE BAR CHORAL SOCIETY: MOZART REQUIEM
TEMPLE CHURCH

THURSDAY 29 NOVEMBER - 19:00

THE SIXTEEN: THE DEER'S CRY
TEMPLE CHURCH

MONDAY 10 TO FRIDAY 14 DECEMBER

TEMPLE WINTER FESTIVAL

FOR MORE INFORMATION AND BOOKINGS PLEASE VISIT TEMPLEMUSIC.ORG

HOME HEALTH PILATES AT TASKER'S

MONDAY 22 OCTOBER
MONDAY 19 OCTOBER
MONDAY 5 NOVEMBER
MONDAY 19 NOVEMBER
MONDAY 3 DECEMBER

MIDDLE TEMPLE LIBRARY

ALL BOOKINGS AND INQUIRIES VIA
LIBRARY@MIDDLETEMPLE.ORG.UK
T: 020 7427 4830

**WEDNESDAY 17 & TUESDAY 23
OCTOBER**
THE ESSENTIALS OF PRACTICAL
LEGAL RESEARCH

THURSDAY 25 OCTOBER
NAVIGATING THE FREE LEGAL
WEB

THURSDAY 1 NOVEMBER **QS**
LEGAL RESEARCH QUALIFYING
SESSION

**MONDAY 5 NOVEMBER
& TUESDAY 11 DECEMBER**
ADVANCED ELECTRONIC
SEARCHING

INNS OF COURT LIBRARIES – SATURDAY OPENING DIARY

| | |
|-------------|---------------|
| 13 OCTOBER | GRAY'S INN |
| 20 OCTOBER | INNER TEMPLE |
| 27 OCTOBER | LINCOLN'S INN |
| 3 NOVEMBER | MIDDLE TEMPLE |
| 10 NOVEMBER | GRAY'S INN |
| 17 NOVEMBER | INNER TEMPLE |
| 24 NOVEMBER | LINCOLN'S INN |
| 1 DECEMBER | MIDDLE TEMPLE |
| 8 DECEMBER | GRAY'S INN |
| 15 DECEMBER | INNER TEMPLE |
| 22 DECEMBER | CLOSED |
| 29 DECEMBER | CLOSED |

B = BENCH ONLY

I = INVITE ONLY

QS = QUALIFYING SESSION

