



Headline Events

Middle Temple Garden Party - Tuesday 5 July 2016

It is that time of year again as we invite you to join us in the beautiful surroundings of our Gardens for the 2016 Middle Temple Garden Party.

Members are invited to bring up to ten guests, as we break out the champagne, roll out the strawberries and revel in the hard work that Kate and her team have put into the Gardens this year.

After the huge success in 2015 we will be continuing in the same vein for 2016. Guests can expect to taste themed flavours from around the world, as well as the offerings of hog and lamb roasts. We'll also be welcoming back a selection of beers at this year's Garden Party, brewed right next to Middle Temple on Essex Street from our award winning friends at Temple Brewhouse. There will be Pimms a' plenty, as well as a host of exciting cocktails.

For more information and to book tickets please contact the Treasury on 020 7427 4800.

Please note this event always proves popular so please ensure your book your tickets soon to avoid disappointment.



Amity Visit to Singapore - 21 to 23 September 2016

Members are invited to the 2016 Amity Visit to Singapore between Wednesday 21 and Friday 23 September. The proposed schedule is as follows:

Wednesday 21 September

- Evening Reception hosted by Middle Temple at the British High Commissioner's Residence, Eden Hall
- Bench Call and Supper at the Four Seasons Hotel

Thursday 22 September

- Full day conference at the Singapore Academy of Law (SAL)
- Dinner at the Regent Hotel, kindly hosted by the SAL, the Singapore Bar and Judiciary



Friday 23 September

- Half day conference at the SAL
- SAL Distinguished Speaker Series Lecture - Master Treasurer, The Rt. Hon Lord Justice Christopher Clarke
- Middle Temple Reception

For more information, or if you intend to join this trip, please let Oliver Muncey know at o.muncey@middletemple.org.uk.

Events in June

Moot Semi-final - Monday 13 June 2016

This year's second Moot Semi-final will take place on Monday 13 June 2016 following dinner. Please support our students taking part in these events.

For more information and to book tickets please contact the Treasury on 020 7427 4800.



Middle Temple and BACFI Employed Bar Garden Party - Tuesday 14 June 2016

The Middle Temple and BACFI Employed Garden Party will take place on Tuesday 14 June from 18.00 to 20.30 in Middle Temple Gardens.

For all bookings please contact the Treasury on 020 7427 4800.

Tickets are £30 per person. A special rate of £25 per person is available for group bookings of 10 or more.



Drop in Mindfulness Sessions - From Thursday 16 June 2016

We have had some wonderful feedback from our Mindfulness drop in sessions last term, so we are absolutely delighted that the sessions are continuing.

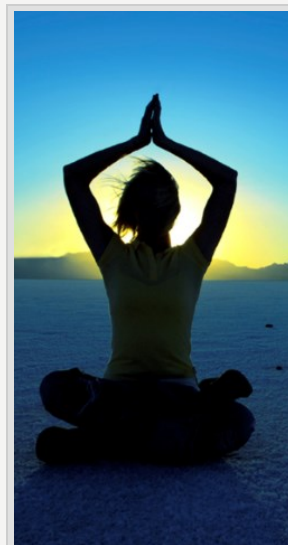
The sessions continue on Thursdays, 18:00 to 19:00, and we suggest a £5 donation to cover costs.

The venues and dates are:

- Thursday 16 June – Whitfield Room
- Thursday 23 June – Prince's Room
- Thursday 30 June – Sherrard Room
- Thursday 7 July – tbc
- Thursday 14 July – Rutledge Room 5
- Thursday 21 July – Sherrard Room
- Thursday 28 July – tba

We hope to see you there for some shared calm. Please do let colleagues and friends know about the sessions.

If you should have any questions, please contact Jo Shaw at jshaw@1ec.co.uk.

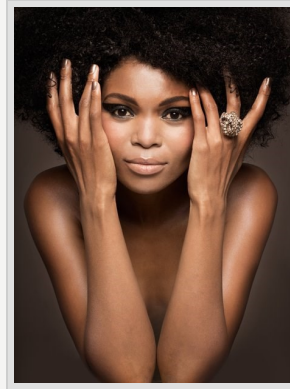


Music Night - Tuesday 28 June 2016

Join us on Tuesday 28 June for Music Night as we welcome Pumeza Matshikiza to Hall again.

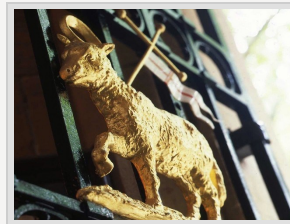
“Springbok Superstar” is how one English newspaper described Pumeza Matshikiza, The Independent newspaper referred to her as “the superstar soprano”. The Guardian headline was “Pumeza Matshikiza: the township soprano who wooed the world”. Those who came to Pumeza Matshikiza's previous performances in Hall will know that these descriptions are well deserved.

For more information and to book tickets please contact the Treasury on 020 7427 4800.



More Events - Looking forward to July

Tuesday 5 July - Middle Temple Garden Party
Monday 11 July - All Inn Dining
Monday 11 July - Temple Women's Forum Garden Party (for bookings please [click here](#))
Tuesday 12 July - Temple Music Foundation @ Temple Church - National Youth Orchestra (bookings via templemusic.org.uk)
Monday 18 July - Temple Employed Bar Forum @ Middle Temple (bookings via innertemple.org.uk)
Tuesday 19 July - Bench Call
Wednesday 27 July - Private Guest Night
Thursday 28 July - Double Call Day

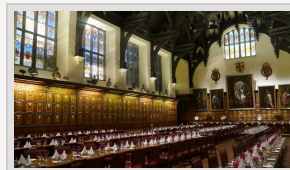


All bookings, unless stated otherwise, can be booked through the Treasury on 020 7427 4800.

Notices and News

Summer Hall Closure

Please note that Hall closes after Lunch on Friday 29 July and will not re-open until Monday 3 October following the 10 year measure of the Hall roof.



Moot Judge required

The Middle Temple is seeking out a Moot judge to help out in the upcoming Inter-Inn Moot, which this year is being hosted by Gray's Inn.

We are selecting two very capable student members to represent Middle Temple, we are also committed to providing one Middle Temple Barrister to act as judge for one of the semi-finals, which will take place on the evening of Monday 20 June.

This year we are hoping to take the crown! If you are available to help please get in touch with Murray Baker at m.baker@middletemple.org.uk.



Summer Lunches at Middle Temple are back!

On Thursdays and Fridays each week until the end of July (weather permitting), enjoy your Middle Temple lunch in the sunshine of Fountain Court.

Middle Temple will provide additional lunch time seating in Fountain Court, to members and their guests between 12:30 and 14:30 for those wishing a change of scenery.

Tables are allocated on a first come first serve basis. For more information please contact the Events department on 020 7427 4820.



Remote access to Middle Temple Library services

To ensure that library services reach members who are not able to use them in person, or who find it more convenient to access the library remotely, we offer a speedy Document Delivery service. You may request that photocopies or scans of library material be made and sent to you by email or post. There is a small charge for this service and student members receive a 50% discount.

More information about the service, including charges and links to our online order forms, can be found on our website [here](#).



Middle Temple Champagne Bar

Join us for the very popular Champagne Bar every Thursday and Friday from 17.00 to 21.00 in Fountain Court (weather permitting).

If the weather does not permit please join us in the new members' lounge, Tasker's, in Middle Temple Ashley Building.



Wellbeing at the Bar update (Spring 2016)

The Wellbeing at the Bar programme is designed to:

- Provide members of the profession with the information and skills they need to stay well
- Support members of the profession as they deal with difficulties that arise in so far as they affect a barrister's professional life
- Provide assistance to those with responsibility (or taking on a supporting role) for those in difficulty or crisis.

Wellbeing at the Bar aims to enable barristers to provide an "optimal professional service" by (i) staying "well" (ii) recognising the signs of becoming "unwell" so as to remedy them and/or (iii) returning from "unwellness" to "wellness". Here (i), (ii) and (iii) are a continuum.

To view the Spring 2016 update on the Wellbeing at the Bar programme, please [click here](#).



Upcoming Bar Council International Events and Opportunities

The Bar of England and Wales is very internationally orientated. A significant proportion of its members have an international practice and that number is increasing all the time. Clients in need of international legal advocacy or advisory services in any field of law can find the right experts at the English Bar.

The Bar Council International Committee and team work to promote both the interests of the Bar and the rule of law abroad. Each month in the Middle Temple eNews we will be including a link to their upcoming international events and opportunities.



The Honourable Society of the Middle Temple

Treasury Office
Ashley Building
Middle Temple Lane
London EC4Y 9BT

© The Honourable Society of the Middle Temple

T: 020 7427 4800

E: members@middletemple.org.uk

If you no longer wish to receive our emails,
please [unsubscribe](#)