



## EVENTS CALENDAR - HILARY, EASTER & TRINITY 2018

### FEBRUARY

**TUESDAY 13** **QS**  
READER'S FEAST  
HH JEREMY CONNOR:  
*A HOUSE ON BOW STREET*



**THURSDAY 15** **QS**  
SHERRARD CONVERSATIONS  
"LION TAMING 101" OR  
"HOW TO COPE WITH  
DIFFICULT JUDGES"

**FRIDAY 16** **QS**  
MUSIC NIGHT: *CALLUM AU  
BIG BAND*

**SATURDAY 17** **QS**  
ORDINARY DINING

**SUNDAY 18** **QS**  
SUNDAY LUNCH

**MONDAY 19** **QS**  
GUEST LECTURE:  
*MRS NICKY PADFIELD AND  
PROFESSOR NICK HARDWICK:  
ASSESSING THE PAROLE  
BOARD*

**THURSDAY 22** **QS**  
SHERRARD CONVERSATIONS:  
*THE CRIMINALIZATION OF  
HIV TRANSMISSION:  
QUESTIONS OF LAW AND  
POLICY*

**THURSDAY 22** **QS**  
PRIVATE GUEST NIGHT

LUNCH CLOSURE DATES:  
THURSDAY 23 MARCH UNTIL MONDAY 9 APRIL  
THURSDAY 8 MARCH FOR CALL DAY  
THURSDAY 26 JULY FOR CALL DAY

### MARCH

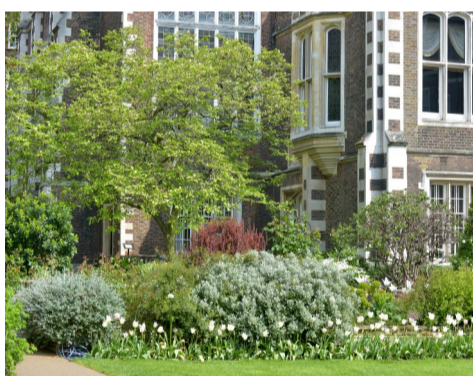
**THURSDAY 1**  
SURVIVE AND THRIVE:  
*THE BARRISTER'S GUIDE TO  
DEBT, SAVINGS AND  
INVESTMENT*

**SATURDAY 3** **I**  
CIRCUIT JUDGES DINNER  
AT MT HALL

**TUESDAY 6** **B**  
ACADEMIC'S DINNER /  
BENCH NIGHT

**THURSDAY 8** **QS**  
HILARY CALL DAY

**WEDNESDAY 14** **B**  
AMITY DINNER FOR THE  
WORSHIPFUL COMPANY OF  
GARDENERS



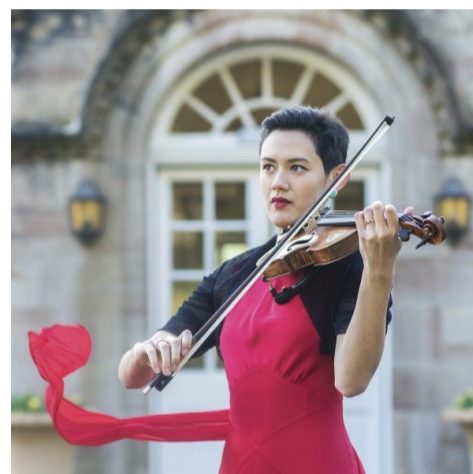
**MONDAY 19** **QS**  
GUEST LECTURE:  
*THE RT HON DOMINIC  
GRIEVE QC MP*

**THURSDAY 22** **QS**  
PRIVATE GUEST NIGHT

**MONDAY 26** **QS**  
BENCH CALL

### APRIL

**TUESDAY 10** **QS**  
MUSIC NIGHT: *SOUTHBANK  
SINFONIA AND STEPHANIE  
CHILDRESS*



**WEDNESDAY 11**  
GAUDY REUNION YEARS OF  
CALL 1998-2003

**TUESDAY 17** **QS**  
BENCH CALL

**MONDAY 23** **I**  
OXFORD SOCIETY DINNER

**TUESDAY 24**  
SURVIVE AND THRIVE:  
*HOW TO FEEL LIKE YOU HAVE  
IT ALL WITHOUT DOING IT ALL*

**THURSDAY 26** **QS**  
PRIVATE GUEST NIGHT

### MAY

**FRIDAY 11 – SUNDAY 13**  
FOUR JURISDICTIONS LAW  
CONFERENCE IN BELFAST

**TUESDAY 15**  
TASTING AT THE TEMPLE:  
ORANGE WINES

**THURSDAY 17** **QS**  
ANNUAL DINNER

**MONDAY 22** **QS**  
MUSIC NIGHT: *ANNA  
HUNTLEY AND JAMES  
BAILLIEU*

### JUNE

**WEDNESDAY 6** **B**  
AMITY DINNER AT INNER  
TEMPLE

**MONDAY 11** **QS**  
ROSAMUND SMITH  
MOOT SEMI-FINAL

**TUESDAY 12** **QS**  
BENCH CALL

**MONDAY 18** **QS**  
ROSAMUND SMITH  
MOOT SEMI-FINAL

**TUESDAY 19**  
BACFI AND TEMPLE  
EMPLOYED BAR FORUM  
GARDEN PARTY

**WEDNESDAY 20**  
SURVIVE AND THRIVE:  
*PEOPLE MANAGEMENT: HOW  
TO MANAGE UP, DOWN AND  
SIDEWAYS*

**MONDAY 25** **QS**  
ALL INN DINING

**TUESDAY 26** **QS**  
MUSIC NIGHT: *NASH  
ENSEMBLE*

### JULY

**MONDAY 2**  
TEMPLE WOMEN'S FORUM  
GARDEN PARTY AT INNER  
TEMPLE

**TUESDAY 3**  
MIDDLE TEMPLE  
GARDEN PARTY

**TUESDAY 10** **QS**  
BENCH CALL

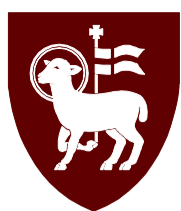
**THURSDAY 19** **QS**  
PRIVATE GUEST NIGHT

**WEDNESDAY 25** **QS**  
& **THURSDAY 26**  
TRINITY CALL DAY

B = BENCH ONLY

I = INVITE ONLY

QS = QUALI-



## EVENTS CALENDAR - HILARY, EASTER & TRINITY 2018

### MIDDLE TEMPLE HISTORICAL SOCIETY

ALL BOOKINGS AND INQUIRIES  
VIA  
MTHS@MIDDLETEMPLE.ORG.UK

**WEDNESDAY 20 FEBRUARY**  
THE TEMPLE SERMON OF  
JOHN DONNE

**THURSDAY 12 APRIL**  
THE TREASURES OF THE  
ARCHIVE AND RARE BOOK  
COLLECTION

### FUNDRAISING

FOR FURTHER DETAILS PLEASE VISIT  
MIDDLETEMPLE.ORG.UK

**SUNDAY 22 APRIL**  
LONDON MARATHON  
RUNNING FOR MIDDLE TEMPLE ARE:  
ANTHONY EDWARDS  
SIMON HUNKA  
OLIVER JACKSON  
JAMES KEELEY  
DARREN LATTY  
JAMES LEGG  
CHLOE CINA

**MONDAY 21 MAY**  
LONDON LEGAL WALK

### TEMPLE MUSIC FOUNDATION EVENTS



**TUESDAY 20 FEBRUARY - 19:00**

PIANO RECITAL IN ASSOCIATION WITH THE KEYBOARD CHARITABLE TRUST

FEAT: VITALY PISARENKO ON PIANO  
PARLIAMENT CHAMBER, INNER TEMPLE

**SATURDAY 10 MARCH 11:00 - 16:45**

COME AND SING WITH JOHN RUTTER  
TEMPLE CHURCH

**WEDNESDAY 21 MARCH 19:00**

TEMPLE SONG - CHRISTOPH PRÉGARDIEN AND JULIA KLEITER WITH JULIUS DRAKE  
MIDDLE TEMPLE HALL

**TUESDAY 17 APRIL 19:00**

PIATTI QUARTET  
TEMPLE CHURCH

**THURSDAY 26 APRIL 19:00**

OUTCRY ENSEMBLE  
TEMPLE CHURCH

**THURSDAY 24 MAY 19:00**

TEMPLE CHURCH CHOIR  
TEMPLE CHURCH

FOR MORE INFORMATION AND BOOKINGS PLEASE VISIT [TEMPLEMUSIC.ORG](http://TEMPLEMUSIC.ORG)

### MINDFULNESS DROP-IN SESSIONS IN TASKER'S

MONDAY 26 FEBRUARY  
MONDAY 12 MARCH  
MONDAY 16 APRIL  
MONDAY 30 APRIL  
MONDAY 14 MAY  
MONDAY 4 JUNE  
MONDAY 18 JUNE  
MONDAY 2 JULY  
MONDAY 16 JULY

### MIDDLE TEMPLE LIBRARY

ALL BOOKINGS AND INQUIRIES  
VIA  
LIBRARY@MIDDLETEMPLE.ORG.UK  
T: 020 7427 4830

**MONDAY 19 FEBRUARY**  
EUROPEAN LEGAL  
RESEARCH TRAINING

**MONDAY 26 FEBRUARY**  
AMERICAN LEGAL  
RESEARCH TRAINING

**MONDAY 5 MARCH**  
EUROPEAN LEGAL  
RESEARCH TRAINING

### INNS OF COURT LIBRARIES – SATURDAY OPENING DIARY

3 FEBRUARY	LINCOLN'S INN
10 FEBRUARY	MIDDLE TEMPLE
17 FEBRUARY	GRAY'S INN
24 FEBRUARY	INNER TEMPLE
3 MARCH	LINCOLN'S INN
10 MARCH	MIDDLE TEMPLE
17 MARCH	GRAY'S INN
24 MARCH	INNER TEMPLE
31 MARCH	CLOSED
7 APRIL	LINCOLN'S INN
14 APRIL	MIDDLE TEMPLE
21 APRIL	GRAY'S INN
28 APRIL	INNER TEMPLE
5 MAY	LINCOLN'S INN
12 MAY	MIDDLE TEMPLE
19 MAY	GRAY'S INN
26 MAY	CLOSED
2 JUNE	INNER TEMPLE
9 JUNE	MIDDLE TEMPLE
16 JUNE	LINCOLN'S INN
23 JUNE	GRAY'S INN
30 JUNE	INNER TEMPLE
7 JULY	LINCOLN'S INN
14 JULY	MIDDLE TEMPLE
21 JULY	GRAY'S INN

The Inn would like to make sure that it holds up to date contact details and communication preferences for all of its members in order to comply with Data Protection legislation.

If you have not already done so, please complete the Inn's Membership Communication Preferences form to indicate which types of information you would like to receive from the Inn.

You have the option to opt-out of any communication you sign up for at any time by contacting the Inn or by clicking opt-out links at the bottom of emails you receive. When our new online membership system is introduced shortly you will be able to manage your communication preferences through this.

For more information or to obtain a copy of the Membership Communication Preferences form please contact the Membership Department at [members@middletemple.org.uk](mailto:members@middletemple.org.uk).

B = BENCH ONLY

I = INVITE ONLY

QS = QUALIFYING SESSION