

LIBRARY NEWSLETTER

Middle Temple Library, Middle Temple Lane, London, EC4Y 9BT
library@middletemple.org.uk ; 020 7427 4830



Welcome!

Vanessa Hayward, Keeper of the Library

Firstly may I wish you all a very Happy New Year and I hope your new year's resolution will be to make regular use of the Library and its facilities. Since the last newsletter appeared, I am happy to report that work on the ground floor has been completed and staff have moved in to their new offices. It looks very smart and it is good to have the Treasury, Finance and Education Departments so close as it makes finding people much easier.

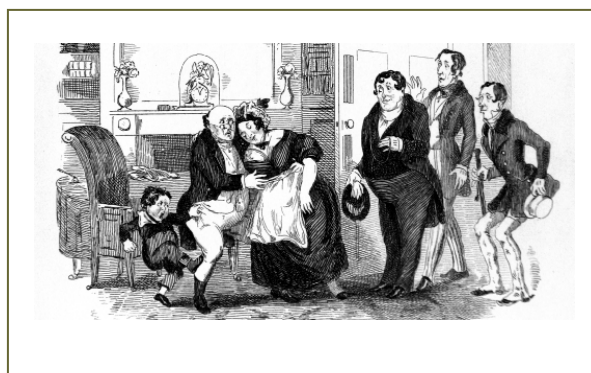
As the building is so much more now than just the Library it has been decided to give it a name. Following a number of suggestions, The Ashley Building was chosen, which is excellent news as Robert Ashley was the founder of the library in 1641 and bequeathed us his collection, which included works on law, medicine, travel, science and geography. Even more exciting news is that the Earl of Shaftesbury, the nearest descendant to Ashley, has agreed to officially open the newly named building in early March.

You may know that Charles Dickens was among our illustrious members, and his bicentenary is being celebrated this year. Many events are taking place at the Inn in connection with the bicentenary. On Tuesday 7th February there is a production of *The Trial of Bardell v Pickwick* in Hall, starring Master Treasurer as Pickwick, and dinner will be in the Library, which means we will have to close at 2.30pm that day. The Gallery floor will also have limited access all day.

Inside This Issue

Welcome	1
Capital Punishment Collection	2
Charles Dickens	2
New Acquisitions	3
Informa Publications	3
Sound in the Library	4
Rare Books	4

New library guides to the collections, and for carrying out legal research, are available on the US Collection (completed) and Parliamentary Publications (almost ready); and others are soon to follow, including EU Publications. Master Woolley, a member of the Library Committee who prepared the guides, is also contemplating some further topics.



We shall be closing at 2.30pm on Tuesday 7 February in preparation for the Bardell v. Pickwick event taking place in Middle Temple Hall

Capital Punishment Collection

Bernadette Keeley, US & Bibliographic Services

The Capital Punishment Collection is located at Bay 195 on the third floor of the library. It was established to develop a record of material on the history of capital punishment and the death penalty debate. The material includes generous donations from the private libraries of Master Blom-Cooper, Professor Anthony Amsterdam and Professor Roger Hood. Books and documents have also been donated by Amicus, Amnesty International, Reprieve and the Illinois-based Center on Wrongful Convictions.

Charles Dickens

In this the year of the 200th anniversary of his birth, the library will have a small display in celebration of the life of Charles Dickens, once a member of Middle Temple.

The display will run for three months starting at the beginning of February. For this event, the Library has acquired two new illustrated books which will be on display: *Bardell v Pickwick*, 1902 and *Bleak House*, 1853.

Charles Dickens was admitted to the Inn in 1839. He had already published four titles: *Sketches by Boz*, *Pickwick Papers*, *Oliver Twist* and *Nicholas Nickleby*. However, in 1855 he found that his writing career was becoming more lucrative than he had envisioned, and decided to rescind his membership.

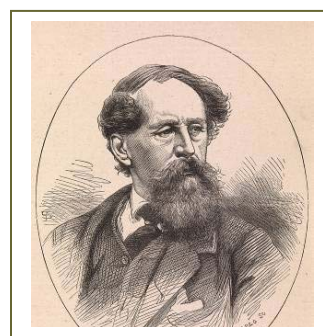
The collection is available for use both in the library and for short loan periods to members, researchers and campaigners.

The following titles were added to the collection in 2011:

Garland, David – Peculiar Institution: America's death penalty in an age of abolition

Sarat, Austin & Jurgen Martschukat – Is the death penalty dying?

The Death Penalty Project kindly donated a copy of their Five Year Report 2006 –2011



A portrait of Dickens taken from The Trial at Bar of Sir Roger C.D. Tichborne, published 1875

In his petition he writes: "literature as a profession would so entirely engross his time and become the business of his life". A facsimile of the letter will be on display.

In January, the BBC aired a special episode about Dickens featuring Armando Iannucci. A portion of the episode was filmed in the library, and Master Arlidqe was interviewed about Dickens' connection to the law. More about this can be read in the BBC News Magazine, at: <http://www.bbc.co.uk/news/magazine-16184487>

New Acquisitions

The library now subscribes to *The Commercial Litigation Journal*, issued six times a year, and has re-instated the subscription to the Encyclopaedia of Forms and Precedents from January 2012.

New titles added to general textbook collection:

Astin, Diane- Housing law: an adviser's handbook

Blanke, Gordon- EU and US antitrust arbitration

Brealey, Mark- Competition litigation: UK practice and procedure

Cockerill, Sara - The law and practice of compelled evidence in civil procedure

Cohabitation Law Practice and Precedents, 5th edition

Barber, Ruth - Confiscation law handbook

Fhima, Ilanah- Trade mark dilution in Europe and the US

Fieldsend, James - Commercial property litigation

Gardiner, Simon- Sports law

Hewetson, Charles- Banking litigation

MacDonald, Alistair- The rights of the child

Mackenzie, Julie- Horse law

Pocklington, David- The law of waste management

Scorey, David - The Bermuda form

Stewart, Nicholas- The law of unincorporated associations

Williams, Alan - Digital media contracts law

New titles added to the Ecclesiastical Collection:

Adam, Will- Legal flexibility and the mission of the church: dispensation and economy in ecclesiastical law

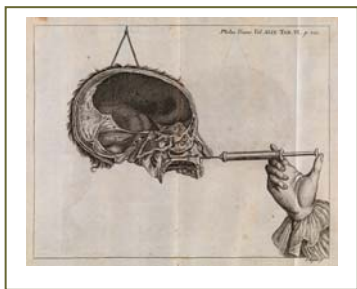
Burgess, John- Ecclesiastical courts and the Church of England Yearbook

Informa Publications

We now provide online access to a number of Informa publications, including *Arbitration Law*, *Building Law Reports*, *Law of Insurance Contracts*, *Insurance Law Monthly*, *Lloyd's Law Reports*, *Lloyd's Maritime and Commercial Law Quarterly*, and *Insurance & Reinsurance Law Reports*. These are available to view via the i-law portal, which is accessible in the library only (i.e. remote access is not available). Please ask the staff at the Enquiry Desk to log you into i-law to access these publications. As it is a single-user license, only one person may use the database at a time.

From January 2012, we have also started a new subscription to *Insurance Law Monthly*. This is currently only available online via i-law, but we will soon be receiving the print copies as well.

*The Library always welcomes donations of practitioner texts.
Donations are acknowledged with a bookplate recording the donation.
Donations to the Library date back to 1641.*



A method proposed to restore the hearing, from The Philosophical Transactions of the Royal Society,

Sound!

We have had a number of requests from members who would like to listen to online lectures and tutorials. Until now, the public computer terminals did not have sound available on them. In January, we enabled sound on the two computers located on the third floor of the library. These computers are situated in the American textbook section. We also have two sets of headphones which can be borrowed. These are located at the Enquiry Desk, and must be signed out.



Particles of snow by John Nettis, from The Philosophical Transactions of the Royal Society, 1757

You can now use the two computers located on the third floor if you require access to online sound resources. We also have two sets of headphones to lend at the Enquiry Desk.

Rare Books

Renae Satterley, Senior Librarian

We now have over 610 images available to view on the *Science Photo Library* website: <http://www.sciencephoto.com/contributor/m tl/list>

Many of the recent additions were taken from the series published by the Royal Society entitled *Philosophical Transactions*. The library has an incomplete set of the *Transactions*, containing twenty-three volumes, covering 1721 to 1766.

All of our early printed book catalogue records (i.e. books printed prior to 1800) can now be searched on COPAC, the national union catalogue for the British Isles, at: <http://copac.ac.uk/>.

We have started cataloguing our small collection of objects and artefacts. The records will be available to view on our online catalogue.

Opening Hours

We have returned to normal opening hours, which are: Monday to Thursday 9.00am – 8.00pm and Friday 9.00am – 7.00pm. Don't forget we also open every 4th Saturday from 10.00am – 5.00pm. Our next Saturday open days will be: 11 February, 10 March, 14 April, and 5 May.

The Library will close at 2.30pm on 7 February, with access to the Gallery floor limited all day.