



## **The Four Jurisdictions Law Conference - London Friday 6 to Sunday 8 May 2016**

This year, the Four Jurisdictions Conference will be held in London from 6 to 8 May.

For those of you who are not familiar with this annual event, it is for members of the Inn to get together with members of the three other Bars and their Judiciary. The venue rotates – 2014 was held in Belfast, 2015 Edinburgh, 2016 London (at Middle Temple) and then onto Dublin in 2017.

I would like to stress three things:

- The event is open to all members of the Inn – Members of Hall and Bench alike.
- The event is a serious legal conference, with two full half day sessions (Saturday and Sunday mornings). We learn from the perspectives of others. (CPD accredited).
- It is fun. There is a strong social side – partners are most welcome, there is time to enjoy London and there are excellent events on both Friday and Saturday nights.

I want to involve members from a range of ages and seniority. I want to involve members of MTYBA as well as Hall generally. It is a great opportunity to meet our legal “cousins” in the other jurisdictions and, importantly, to meet and have fun with members of our Inn. It is especially a chance for those who are Circuit based to have a jolly good weekend with those from London and vice versa. I urge our Members from out of London seriously to consider joining in.

I attach:

- The programme (5 CPD points accredited to the full course).
- A registration form with payment details.
- Hotel information: Participants are expected to make their own arrangements for accommodation. Please refer to the attached list and map for suggested hotels in the area, many of which offer a discounted weekend rate if “Middle Temple” is mentioned when booking.

Please note we would like to receive registrations and payment by **Wednesday 20 April 2016** so that catering arrangements etc. can be finalised.

There are a limited number of places available at a reduced price for those under 5 years Call and those over 5 years but under 10 years Call on a first come first served basis.

Anyone wishing to attend the conference should contact Rachel Pydiah, PA to the Under Treasurer at [r.pydiah@middletemple.org.uk](mailto:r.pydiah@middletemple.org.uk) or **020 7427 4803**.



## The Four Jurisdictions Law Conference - London Friday 6 to Sunday 8 May 2016

### PROGRAMME

***Dress for the Conference is smart/casual. Dress for the Dinners on Friday and Saturday is Lounge Suit.***

#### **Friday 6 May 2016**

7.30 pm Drinks and Dinner hosted by Master Treasurer  
Middle Temple Library, Ashley Building

#### **Saturday 7 May 2016**

***(Conference will be held in Hall)***

9 am- 9.30 am Arrival Tea/Coffee

9.30 am – 10.45 am

#### **Session I**

*“Climate Change: What role do the courts have in addressing climate change?”*

10.45 am – 11.15 am

Coffee Break

11.15 am – 12.30 pm

#### **Session II**

*“ECHR Articles 2 and 6: How far back must we go? May the dead rest in peace and the living at ease?”*

12.30 pm – 1.15 pm

Lunch in the Bench Apartments

1.15 pm - 2.30 pm

#### **Session III**

*“Cheap and Cheerful Justice: How can we provide to access to civil justice?”*



2.30 pm	Afternoon Free
7.00 – 8.00 pm	Talk by The Rev'd Robin Griffith-Jones, Master of the Temple, followed by drinks in the Church.
8.15 pm	Dinner in Middle Temple Hall

**Sunday 8 May 2016**

09.30 am - 11.00 am

Session IV

*“Defamation Reformed: What is the right way forward?  
Where are we going?”*

11.15 am – 12.30 pm

Matins / or Choral Communion at Temple Church

or

11.15 am – 12.30 pm

A guided visit to the ‘**Soane Museum**’

The Soane Museum is the extraordinary house of Sir John Soane, one of the greatest English architects, who built and lived in it more than a century and a half ago.

The Museum has been kept as it was at the time of his death nearly 180 years ago. It displays his collection of antiquities, furniture, sculptures, architectural models, paintings – including work by Hogarth, Turner and Canaletto – and over 30,000 architectural drawings. It's a vast, extraordinary collection, full of curiosities and surprises. More information available at: <http://www.soane.org/about>

Please note:

- that this is a guided tour, the museum is being opened specially on our behalf, hence the admittance charge.
- the cost per person is £30 inc VAT
- numbers are limited to 30 per tour
- depending on take-up tours will commence at either 11.15am or 11.30am

1.00 pm

Lunch in Middle Temple Hall



## The Four Jurisdictions Law Conference - London Friday 6 to Sunday 8 May 2016

### REGISTRATION FORM

Name: .....

Full Title (for administrative purposes): .....

Organisation & Jurisdiction: .....

Address: .....

.....

.....

Telephone: .....

Email: .....

Dietary requirements: .....

Name of Spouse/Partner: .....

Dietary requirements of spouse/partner: .....

### Conference Fees

We are delighted that we have been able to keep the cost the same as it was in 2012. The cost for the entire conference programme is **£295 + VAT per person**.

Please use the tables below to indicate your attendance and calculate the amount payable.

#### Option One: Entire Conference

Item/Event	Price (per person)	VAT	Total Price	Tick for Attendance	Tick for Guest's Attendance	Total Payable
Entire Conference (includes all meals)	£295	£59	£354			
Visit to the Soane Museum	£30	-	£30			
<b>Total payable</b>						



**Option Two: Partial Conference**

Item/Event	Price (per person)	VAT	Total Price	Tick for Attendance	Tick for Guest's Attendance	Total Payable
Conference only (including lunches on Saturday & Sunday, 7-8 May)	£175	£35	£210			
Buffet Dinner on Friday, 6 May	£55	£11	£66			
Dinner in Middle Temple Hall on Saturday, 7 May	£80	£16	£96			
Visit to the Soane Museum	£30	-	£30			
<b>Total Payable</b>						

**Method of payment:** .....

**Signed:** .....

**Date:** .....

**Please make payment by Wednesday 20 April 2016:** either (1) by sending a cheque made payable to 'The Honourable Society of the Middle Temple', to Rachel Pydiah; (2) by telephoning Rachel Pydiah, on 020 7427 4803 who will take debit/credit card details; or (3) by Bank Transfer to RBS, Sort Code: 16-00-15, Account: 23251852, Ref: 4JLC surname.

**Please Return Registration Form to:** Mrs Rachel Pydiah, PA to the Under Treasurer, Ashley Building, Middle Temple Lane, London, EC4Y 9BT.

Email: [r.pydiah@middletemple.org.uk](mailto:r.pydiah@middletemple.org.uk)



## **Parking**

Parking in the Temple is limited. If you are planning to park please contact Rachel Pydiah on 020 7427 4803 for full details. Please note that entrance into the Temple is via Tudor Street. A map for your convenience is attached at *Annex 1*.

## **Access to the Temple**

The gates and doors of the Temple are closed and locked from 8.30 pm on Friday evening and all weekend, except on Sunday when the door from Fleet Street onto Inner Temple Lane is open for access to Temple Church. 24 hour pedestrian and vehicular access is via Tudor Street. Maps of the area and the Temple are attached at *Annex 2*.

Middle Temple Benchers & members can gain access into the Temple by using their Middle Temple ID proximity card. For assistance, please ring the 24-hour security line/duty porter on 020 7797 7768.



## Middle Temple, Gardens and Grounds



Middle Temple



Middle Temple Hall



Middle Temple Hall and Gardens



Temple Church





## **The Four Jurisdictions Law Conference - London** **Friday 6 to Sunday 8 May 2016**

### **HOTEL DETAILS**

All the Hotels below are within a 5 - 15 minute walk of Middle Temple and are located on the map attached at *Annex 3*:

#### **A: Z-Hotels - City (Boutique hotel, 4\*)**

Z City has everything you need for a couple of nights in town. Concentrated style, an out-of-town price. The hotel is a designer conversion of a former office building, with 109 bedrooms arranged over lower ground, ground and three upper floors. Z City is situated just outside the Temple.

##### **2016 rates -**

Single: Room Only £100; Inc B'fast £119

Queen: Room Only £135; Inc B'fast £154

Inside Queen (no window): Room only £125; Inc B'fast 144

Inside Double (no window): Room only £115; Inc B'fast £134



T: 020 3551 3718

E: [city@thezhotels.com](mailto:city@thezhotels.com)

W: [www.thezhotels.com](http://www.thezhotels.com) (Select Z-City)

Quote – User 'Middle Temple', password 'temple' to receive 10% corporate discount

#### **B: Apex Temple Court Hotel (4\* Hotel)**

Situated off Fleet Street, this landmark building has been converted into a luxurious, four star hotel which enjoys a strong sense of tranquility that is rare for a city centre hotel. The Apex Temple Court Hotel combines contemporary design and technology with luxurious rooms and public areas.

This stunning hotel has 184 luxury rooms and suites, offering complimentary Wi-Fi throughout and local calls for guests. Apex Hotels were voted amongst the top five, for the category of 'Best UK Hotel Group' in the Guardian Travel Awards 2013 and the Apex Temple Court Hotel received a 2013 TripAdvisor Certificate of Excellence Award for another consecutive year.

##### **2016 rates -**

Sunday – Thursday from £199 + VAT

Friday – Saturday from £145 + VAT

T: 0845 365 0000 and

E: [london.reservations@apexhotels.co.uk](mailto:london.reservations@apexhotels.co.uk)

W: [www.apexhotels.co.uk/apex-temple-court-hotel](http://www.apexhotels.co.uk/apex-temple-court-hotel)

Quote - Middle Temple





**C: Club Quarters (Boutique hotel, no star rating but 4\* equivalent)**

The Honourable Society of Middle Temple is a member of Club Quarters, a proven concept for the hotel industry. Club Quarters are full service hotels for private use by guests and employees of member companies. They offer unique and complimentary services for the business traveller in a club-like setting. Club Quarters are located in: London Holborn, near Covent Garden and the Theatre District; in the 'City' near the Bank of England; adjacent to St. Pauls Cathedral and in Central London, adjacent to Trafalgar Square.

**2016 rates -**

Sunday – Thursday from £161 + VAT

Friday – Saturday from £72 + VAT

T: 020 7451 5800 and

E: [memberservices@clubquarters.com](mailto:memberservices@clubquarters.com)

W: [www.clubquarters.com](http://www.clubquarters.com)

Quote - **Middle Temple**



**D: Crowne Plaza - The City (4\* Hotel)**

Crowne Plaza London - The City is a 4\* deluxe hotel located in the heart of London's Financial district. Just a 5 minute walk from Middle Temple, the location is steeped in rich cultural and historic heritage, surrounded by London's key attractions. Built on the foundations of King Henry VIII's Bridewell Palace, the hotel features 204 spacious and modern rooms, and an award-winning dining experience.

**2016 rates –**

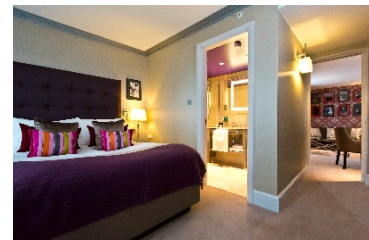
From £177

T: 020 7438 8072

E: [loncy.res@ihg.com](mailto:loncy.res@ihg.com)

W: [www.cplondoncityhotel.co.uk](http://www.cplondoncityhotel.co.uk)

Quote ID **954322243** on website or **Middle Temple** on telephone for 15% off Best Available Rate





### **E: The Savoy (5\* Hotel)**

To stay at The Savoy is to follow in the footsteps of Sir Winston Churchill, Frank Sinatra, Christian Dior, Maria Callas, Claude Monet and Katherine Hepburn. Originally opened in 1889, The Savoy's old-style glamour now sparkles with a fresh new 21st century lustre following one of the most ambitious hotel restorations in British history, just over three years ago.

Perfectly placed in the heart of one of the world's most vibrant cities and on the banks of the River Thames, The Savoy is just steps away from the colour and buzz of Covent Garden and a short taxi ride to renowned London landmarks or to the ultimate designer shopping destinations; Knightsbridge, Mayfair and Chelsea.

#### **2016 rates -**

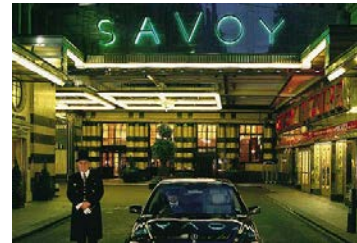
From £250 plus VAT

T: 020 7836 4343

E: [savoy@fairmont.com](mailto:savoy@fairmont.com)

W: [www.fairmont/savoy](http://www.fairmont/savoy)

Quote **Middle Temple**



### **F: Grange Hotels, including St. Paul's & Holborn Hotel (5\* Hotel)**

Grange Hotels, London's leading independent hotel group, provides luxury 4\* and 5\* accommodation, in desirable locations across Central London. Middle Templars can choose from 7 Grange Hotels near Middle Temple, including the 5\* Grange Holborn Hotel with 200 luxury guest bedrooms, a fully equipped Health and Fitness Club with 13m pool, and in-house dining outlets including speciality Japanese restaurant Koto. These exceptional luxury hotels offer the ideal retreat for Middle Templars seeking premium accommodation in the heart of Central London.

#### **2016 rates -**

From £140 + VAT

T: 0845 450 9900 E: [sales@grangehotels.com](mailto:sales@grangehotels.com)

W: [www.grangehotels.com](http://www.grangehotels.com)

Quote **Middle Temple for Grange St. Pauls**





**G: Waldorf Hilton (5\* Hotel)**

Situated on the verdant, tree-lined thoroughfare of Aldwych, The Waldorf Hilton hotel enjoys a fabulous Covent Garden location in the heart of London's theatre district. One of the capital's most iconic hotels, The Waldorf Hilton London hotel showcases every imaginable 21st Century comfort against a backdrop of genuine historic splendour. Dine or take afternoon tea in the stylish Homage Restaurant or sip signature cocktails with friends and fellow guests in the new chic 1920's themed bar and lounge 'Good Godfreys'.

**2016 rates -**

From £259 inc VAT

T: 020 7836 2400

W: [www.waldorfhilton.co.uk/](http://www.waldorfhilton.co.uk/)



**H: One Aldwych (5\* Hotel)**

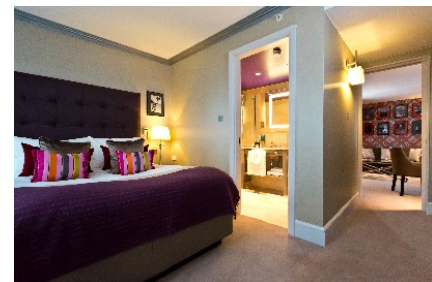
One Aldwych sits in an enviable location in the centre of Covent Garden – London's new world-class destination for culture, fashion and food, not to mention theatre. Contemporary luxury in the heart of London, One Aldwych is a calming sanctuary situated in the heart of Covent Garden.

**2016 rates -**

Best Available rates from £293.25

T.020 7300 1000

W [www.onealdwych.com/rooms](http://www.onealdwych.com/rooms)





**I: Strand Palace Hotel (4\* Hotel)**

Whether you're staying for pleasure or you require the services of a professional and experienced business environment, the Strand Palace offers London's hospitality at its very best.

**2016 rates -**

From £140 per night.

T: 020 7379 4737

W: [www.strandpalacehotel.co.uk](http://www.strandpalacehotel.co.uk)



**J: Premier Inn Blackfriars (3\* Hotel)**

With St Paul's Cathedral to one side, Tate Modern to the other, and the City on our doorstep, it's hard to get more central than Premier Inn London Blackfriars. Wander to the West End and Covent Garden. Stroll along the Thames to Big Ben and the London Eye or catch a show at the world-famous Mermaid Theatre, next door.

**2016 rates -**

From £79 per night

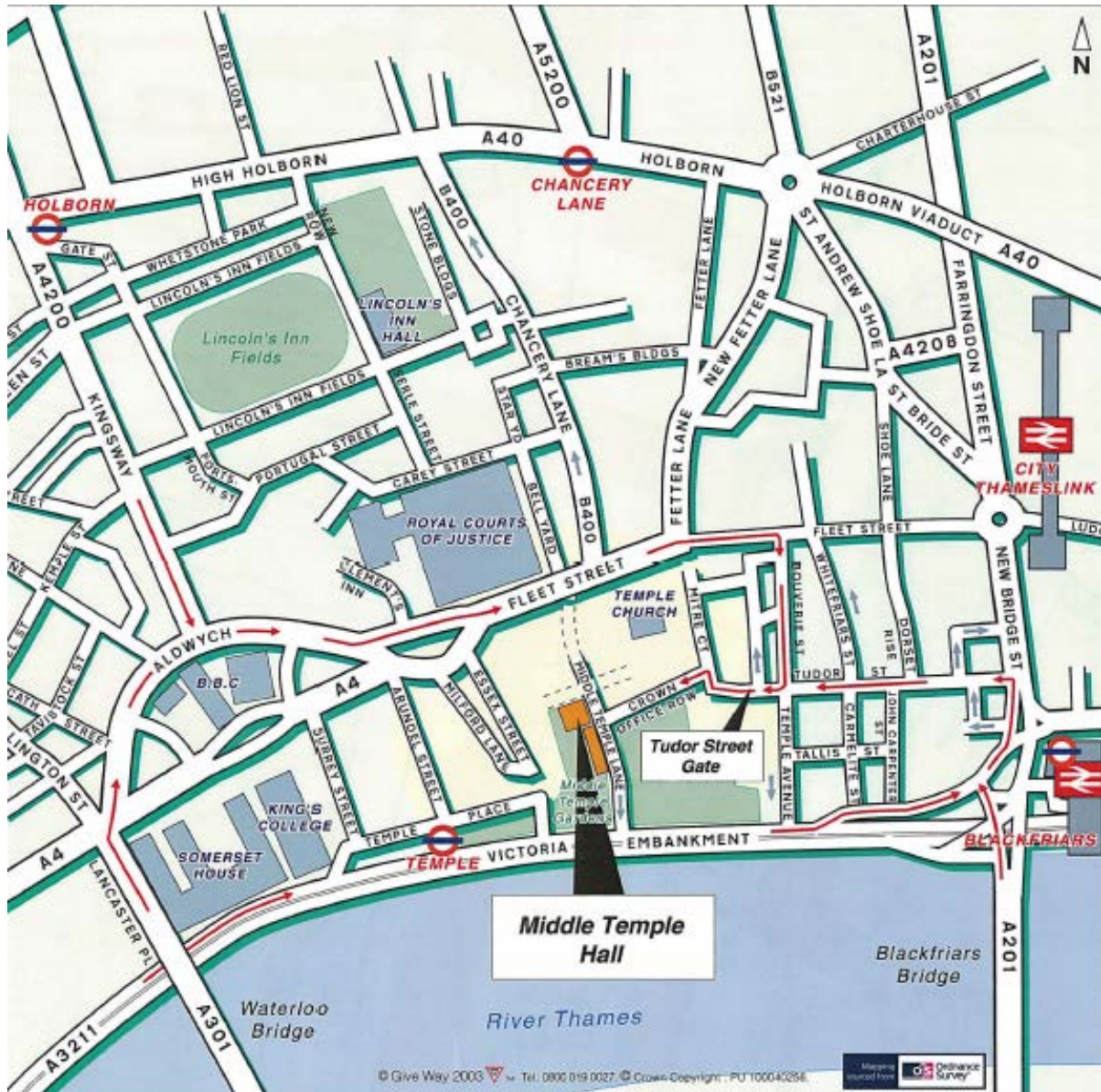
T: 0871 527 9362

[www.premierinn.com/blackfriars](http://www.premierinn.com/blackfriars)





### Annex 1 – Access to Middle Temple by car



#### **Please note:**

Vehicle access to the Temple is via Tudor Street. Vehicles must exit onto the Embankment (turn left only) between 7am and 8.30pm on weekdays. The only vehicle exit after 8.30pm on weekdays and at weekends is via Tudor Street which is in have a two way street.

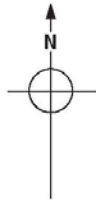
The main pedestrian entrances and exits are: Tudor Street (24hrs); The Embankment on weekdays between 7am and 8.30pm; Middle Temple Lane into Fleet Street (24hrs) but Fleet Street into Middle Temple Lane 7am to 8.30pm Monday to Friday.

There is no parking in Middle Temple on weekdays and only limited parking at weekends. Vehicles parked in Inner Temple grounds may be clamped.



THE HONOURABLE SOCIETY OF THE  
**MIDDLE TEMPLE**

**Annex 2 – Middle Temple Site map**



-  Step-free access to Blackstone House and Queen Elizabeth Building only
-  Step-free access to the remainder of the site, including Temple Church
-  First Aid point with Defibrillator

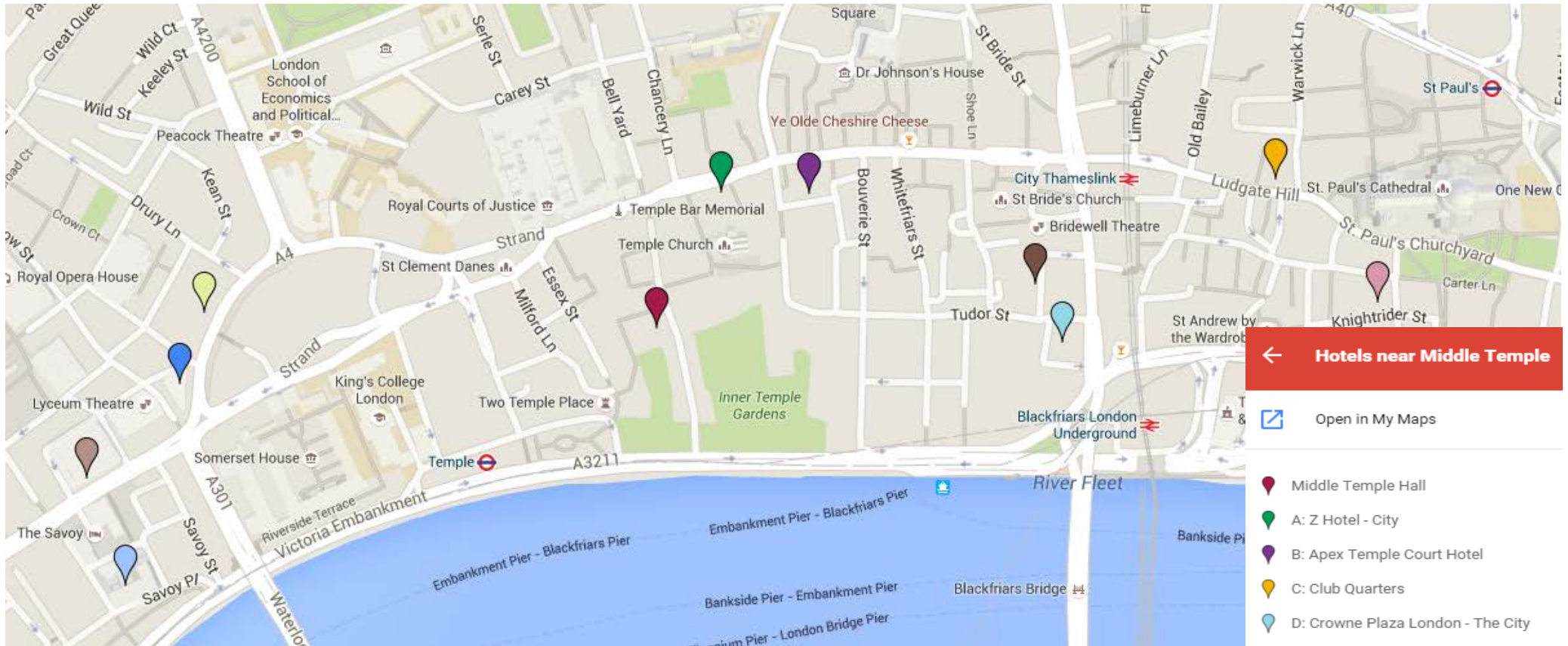
0 10 20 30 40 50  
SCALE IN METRES












← to Temple station

VICTORIA EMBANKMENT



### Annex 3 - Map indicating positions of hotels



-  Middle Temple Hall
-  A: Z Hotel - City
-  B: Apex Temple Court Hotel
-  C: Club Quarters
-  D: Crowne Plaza London - The City
-  E: The Savoy Hotel
-  F: Grange St. Paul's Hotel
-  G: The Waldorf Hilton, London
-  H: One Aldwych Hotel
-  I: Strand Palace Hotel
-  J: Premier Inn Blackfriars